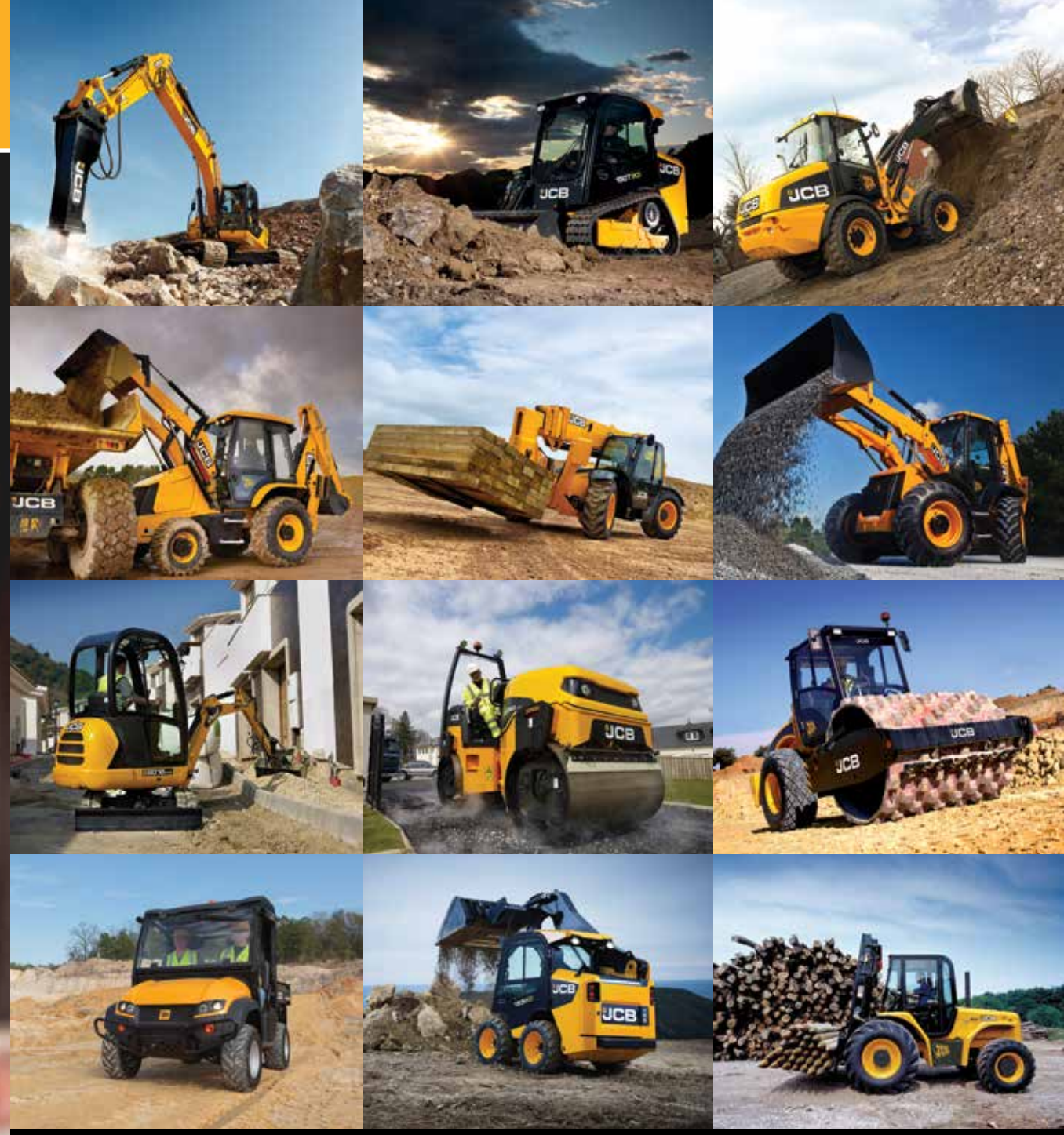


WOULDN'T
OVER THIS
TO WORK

YOU WO
CLIMB OV
TO GET T



ONE COMPANY, OVER 300 MACHINES.



INTRODUCING THE 325T^{eco} FORESTMASTM



The ForestMaster Defense Package from JCB turns your JCB Compact Tracked Loader into an impenetrable fortress. Already the world's safest tracked loader, the JCB 325T ForestMaster, protects both operator and machine from the hazards of the forestry industry. Key features include:

1 The single arm **PowerBoom** structure provides a safe route for hydraulic hoses so that they are well protected from damage. A single JCB PowerBoom boasts up to 20% more steel than our rivals' twin-arm designs. The **tilting cab design** allows one person to access the machine's power train and hydraulic components for maintenance and servicing.

2 The ForestMaster features a **JCB ecoMAX engine**, offered in 74hp, with minimal emissions and fuel consumption. No after treatment requirements are particularly important in Forestry applications. Heat created on other machines, in combination with high amounts of chaff creates a fire hazard, giving the ecoMAX a distinct advantage.

3 **Forestry cutting head** design utilizes a high output variable displacement piston motor with self aligning belt drive providing maximum productivity.

4 Equipped with a **recovery winch** with a capacity of 15,000 lbs., the winch allows operators to resume work with zero downtime.

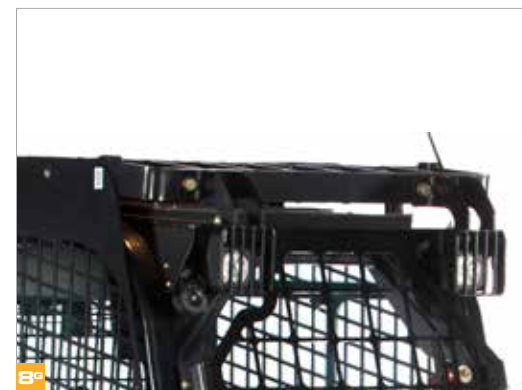
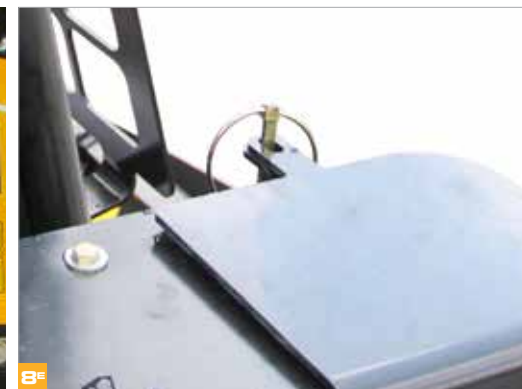
5 The **cab environment** is 33% larger than ordinary skid steer cabs. Includes a comfortable, standard mechanical suspension seat, pressurized and isolation mounted enclosed cab design.

6 Overall performance is improved by the efficient **cooling system** which includes: Cooling Pack Guard, Reversing Fan and Standard-Fit Air Intake Scavenge System.

7 Level 2 **Falling Object Protection Structure (FOPS)** shields the operator from danger above while left and right hand steel mesh provide peripheral protection.

8 **Protection Kit** includes:

- ^AExhaust Cover
- ^BLeft Hand Quarter Panel Guard
- ^CHigh Flow Steel Tube Guard
- ^DLoader Hydraulic Hose Guard
- ^EAuxiliary Coupler Guard
- ^FTrack Tube Guard
- ^GFront Work Light Protection



325T FORESTMASTM SPECIFICATIONS

Engine

Model	EcoMAX TCAE-55
Emission Certification	EPA-T4F (EU S3B)
Gross Peak Power	74hp at 2,400 RPM
Displacement	268 cu. in.
Air Cleaner	Centrifugal dry type engine

Undercarriage

Track Width	17.7 (450mm)
Tractive Effort	41432N

Fuel Capacity

Fuel Tank	27.2 gal
-----------	----------

Mulching head

Overall Width	73 in.
Overall Height	57.6 in.
Overall Length	46.3 in.

Cutting Width	60 in.
Number of Cutting Hammers	45

Max Operating Pressure	4,000 psi
Weight	2057 lb.

Weight/Dimension

Overall Length	13'6"
Weight	12,515 lbs.