

C45III PORTABLE CONE PLANT



Note: The overflow chute and hopper support structure shown in the above photo are not included with a standard plant.

STANDARD FEATURES

RC45III Cone Crusher

- ▶ High efficiency EJay® Rollercone® roller bearing construction
- ▶ Hydraulic powered thread adjust and clamp system
- ▶ 5 hp (3.7 kW) 3-phase electric/hydraulic module with manual controls
- ▶ Non-ferrous thread inserts for wear resistance
- ▶ Heavy-duty cast steel base frame
- ▶ Large unobstructed feed opening
- ▶ Non-ferrous V-seat wear liners
- ▶ Quick reset hydro-pneumatic tramp iron relief system
- ▶ Self-contained oil reservoir
- ▶ Close running deep tapered grooved labyrinth seals
- ▶ 115 volt immersion oil heaters with thermostat
- ▶ Lubrication oil flow safety switch and warning horn
- ▶ Non-bridging sloped feed hopper

Conveyor

- ▶ Undercrusher conveyor with motor and drive guard
- ▶ 3-ply conveyor belt with vulcanized splice

Main Frame

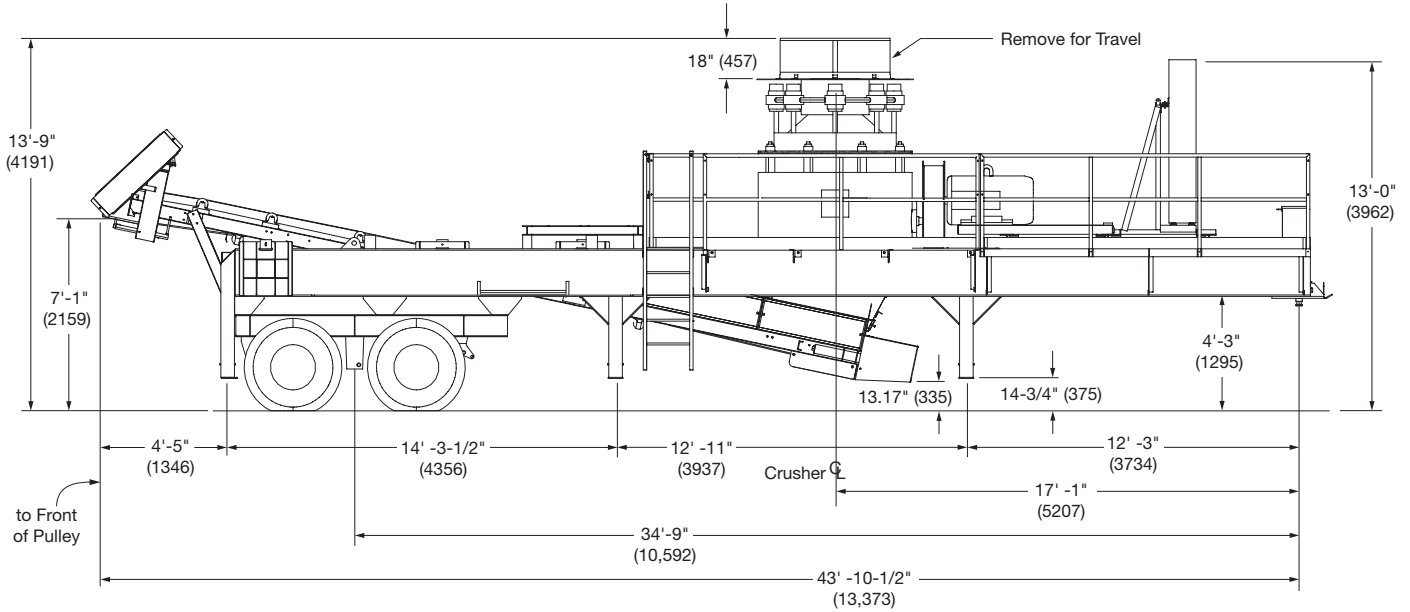
- ▶ Folding walkways, ladder and safety railings
- ▶ Fifth wheel kingpin
- ▶ Spring suspension
- ▶ Budd wheels
- ▶ Mud flaps, brake and turn signals
- ▶ Dual axle with air brakes
- ▶ Six screw jacks and ground pads
- ▶ Tool box

OPTIONAL EQUIPMENT

- ▶ Complete electrical switchgear for on-plant motors
- ▶ Remote push-button box on 50' (15 m) tether
- ▶ Electric motor for cone
- ▶ Automatic cold oil circulation kit
- ▶ Hydraulic leveling jacks
- ▶ Hydraulic run-on jacks

SPECIFICATIONS

Terex® Minerals Processing Systems Cedarapids C45III Portable Cone Plant



SPECIFICATIONS

Cone..... RC45III
 Undercrusher conveyor..... 42" x 28'-3" (1067 x 8611)
 Tires..... Eight 11.00R x 22.5 14-ply

Travel Dimensions

Travel width..... 9'-5" (2870)
 Travel height..... 13'-0" (3962)
 Travel length..... 46'-0" (14,021)

Operating Dimensions

Operating width..... 11'-10" (3607)
 Operating height..... 13'-9" (4191)

Horsepower

RC45III 200 hp (149 kW), 1200 rpm, tefc
 Undercrusher conveyor..... 15 hp (11 kW), 1800 rpm, tefc
 Lube oil pump..... 1½ hp (1.1 kW)
 Hydraulic pump ½ hp (.37 kW)

Approximate Weights (drives included)

Total 57,400 lbs (26,002 kg)
 Rear 30,400 lbs (13,771 kg)
 Kingpin 27,000 lbs (12,231 kg)

www.terexmps.com

Effective Date: March 2012. Product specifications and prices are subject to change without notice or obligation. The photographs and/or drawings in this document are for illustrative purposes only. Refer to the appropriate Operator's Manual for instructions on the proper use of this equipment. Failure to follow the appropriate Operator's Manual when using our equipment or to otherwise act irresponsibly may result in serious injury or death. The only warranty applicable to our equipment is the standard written warranty applicable to the particular product and sale and Terex makes no other warranty, express or implied. Products and services listed may be trademarks, service marks or trade-names of Terex Corporation and/or its subsidiaries in the USA and other countries. All rights are reserved. Terex is a registered trademark of Terex Corporation in the USA and many other countries. © 2011 Terex Corporation.

Terex® Minerals Processing Systems, 909 17th Street NE, Cedar Rapids, IA 52402 USA
 Tel +1 319 363 3511 Fax +1 319 399 4871 www.terexmps.com

Form 25656 (3/12)



WORKS FOR YOU.™