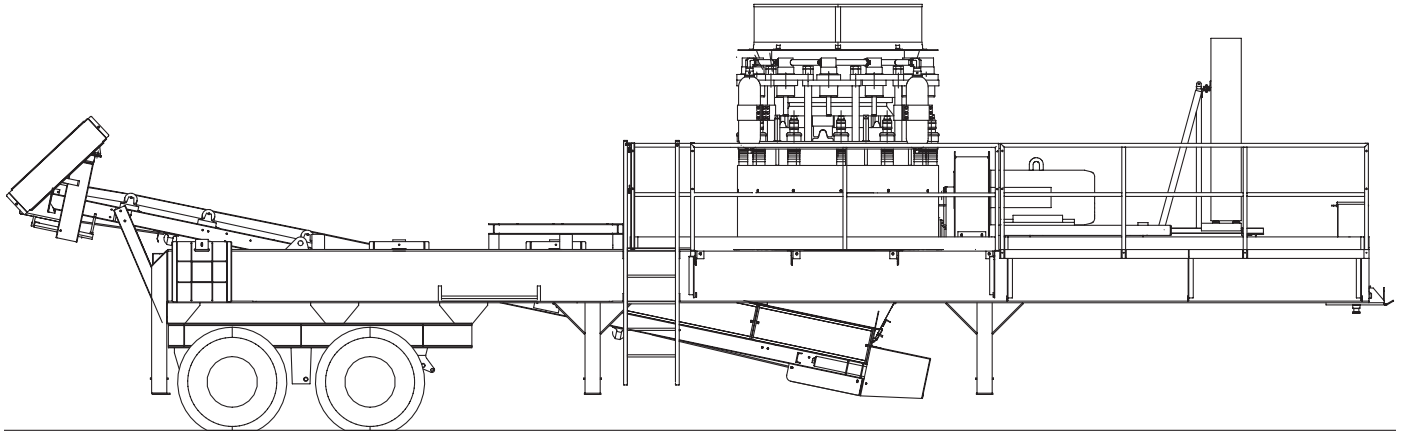


C54II PORTABLE CONE PLANT



STANDARD FEATURES

RC54II Cone Crusher

- ▶ High efficiency ElJay® Rollercone® roller bearing construction
- ▶ Direct-gear-drive lubrication oil pump with safety switch and warning horn
- ▶ Hydraulic setting adjustment
- ▶ Pre-start lubrication pump
- ▶ Oil flow meter
- ▶ V-belt drive and guard
- ▶ Alloy steel pinion shaft and gear set
- ▶ Bolt-on counterweights provide balance
- ▶ Hydro-pneumatic tramp iron relief system with pump
- ▶ Self-contained oil reservoir
- ▶ Undercrusher hopper
- ▶ Interchangeable between standard and fine crushing chambers
- ▶ Patented replaceable vee-seat inserts
- ▶ Replaceable strut guards
- ▶ Spiral bevel ring and pinion gears

Conveyor

- ▶ Undercrusher conveyor with motor and drive guard
- ▶ 3-ply conveyor belt with vulcanized splice

Main Frame

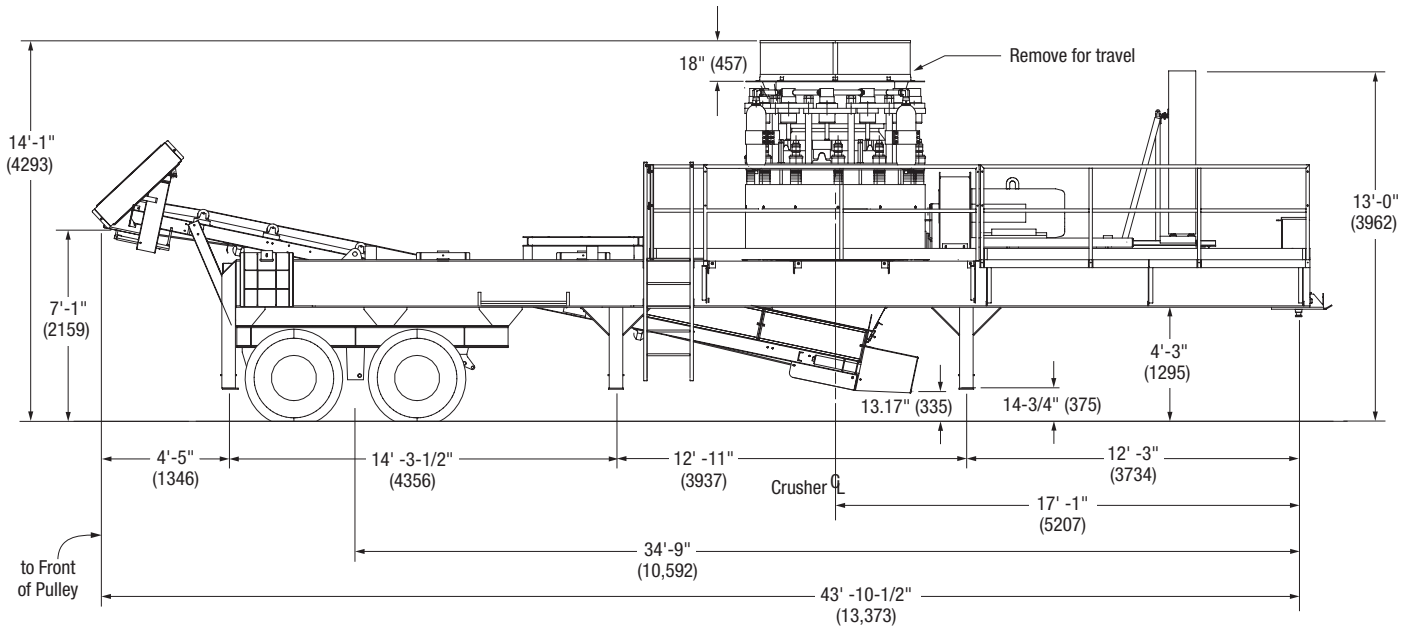
- ▶ Folding walkways, ladder and safety railings
- ▶ Fifth wheel kingpin
- ▶ Spring suspension
- ▶ Budd wheels
- ▶ Mud flaps, brake and turn signals
- ▶ Dual axle with air brakes
- ▶ Six screw jacks and ground pads
- ▶ Tool box

OPTIONAL EQUIPMENT

- ▶ Complete electrical switchgear for on-plant motors
- ▶ Remote push-button box on 50' (15 m) tether
- ▶ Electric motor for cone
- ▶ Automatic cold oil circulation kit
- ▶ Hydraulic leveling jacks
- ▶ Hydraulic run-on jacks

SPECIFICATIONS

Terex® Minerals Processing Systems Cedarapids C54II Portable Cone Plant



SPECIFICATIONS

Cone..... RC54II
 Undercrusher conveyor..... 42" x 28'-3" (1067 x 8611)
 Tires..... Eight 11.00R x 22.5 14-ply

Travel Dimensions

Travel width..... 9'-5" (2870)
 Travel height..... 13'-0" (3962)
 Travel length..... 46'-0" (14,021)

Operating Dimensions

Operating width..... 11'-10" (3607)
 Operating height..... 14'-1" (4293)

Horsepower

RC54II..... 300 hp (222 kW), 1200 rpm, tefc
 Undercrusher conveyor..... 15 hp (11 kW), 1800 rpm, tefc
 Lube oil pump..... 1 hp (.75 kW)
 Hydraulic pump..... 1/2 hp (.37 kW)

Approximate Weights (drives included)

Total..... 69,000 lbs (31,257 kg)
 Rear..... 36,000 lbs (16,308 kg)
 Kingpin..... 33,000 lbs (14,949 kg)

www.terexmps.com

Effective Date: March 2012. Product specifications and prices are subject to change without notice or obligation. The photographs and/or drawings in this document are for illustrative purposes only. Refer to the appropriate Operator's Manual for instructions on the proper use of this equipment. Failure to follow the appropriate Operator's Manual when using our equipment or to otherwise act irresponsibly may result in serious injury or death. The only warranty applicable to our equipment is the standard written warranty applicable to the particular product and sale and Terex makes no other warranty, express or implied. Products and services listed may be trademarks, service marks or trade-names of Terex Corporation and/or its subsidiaries in the USA and other countries. All rights are reserved. Terex is a registered trademark of Terex Corporation in the USA and many other countries. © 2012 Terex Corporation.

Terex® Minerals Processing Systems, 909 17th Street NE, Cedar Rapids, IA 52402 USA
 Tel +1 319 363 3511 Fax +1 319 399 4871 www.terexmps.com

Form 22529 (3/12)



WORKS FOR YOU.™