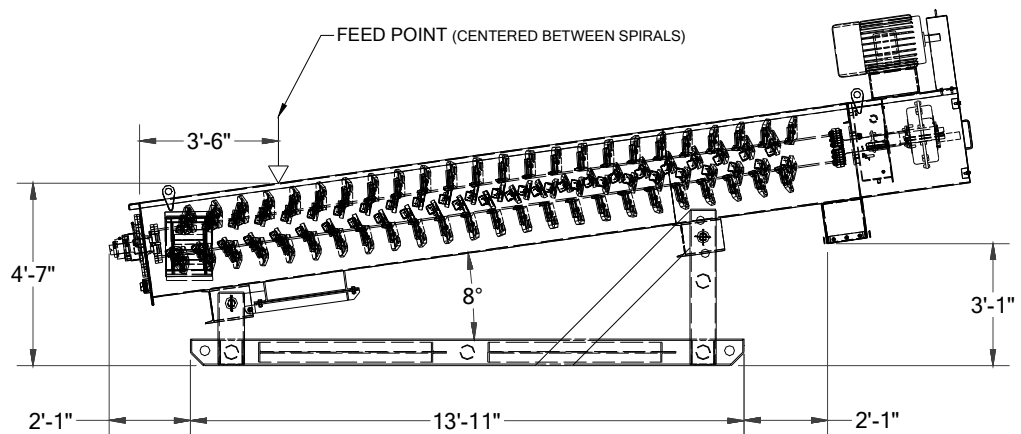
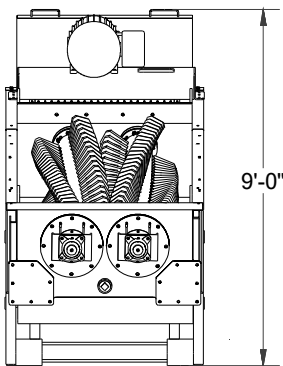
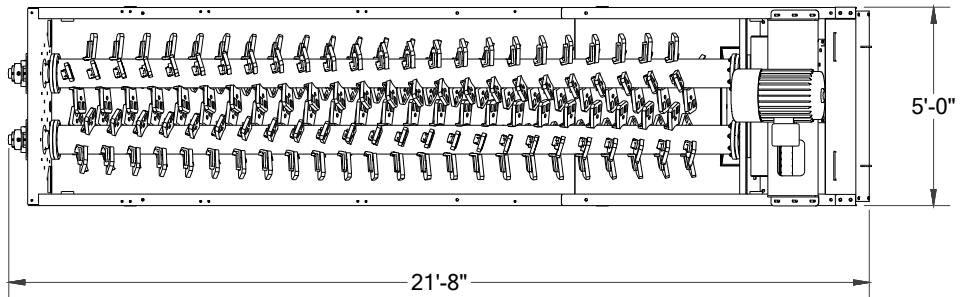


SERIES 8000 LOGWASHER

Model 8024-18 Spec Sheet



Note: Unit Shown @ 8° Angle of Operation

● MAIN TANK

- 1/4" welded plate steel construction
- 3" rising current inlet
- Large (nominal 8" square) tank drain/clean-out ports
- Overflow discharge ports with adjustable level weir boards on each side of the unit

● SPIRAL ASSEMBLY

- Spiral pipe - heavy wall 8-5/8" dia.
- Cast steel paddle brackets
- 7-1/2" L x 5-13/16" W x 1-1/8" T cast Ni-Hard paddle tips with corrugated face
- Reverse involuement paddle configuration (see reverse side for additional information)
- Greaseable, externally mounted Dodge Imperial E tail end flange bearing
- Head end support via the gear box
- Lower end seal - chrome plated stainless steel wear sleeve, water tight bellows type rubber seal and secondary grease seal

● DRIVE ASSEMBLY

- High efficiency v-belt drive assembly
- 40 HP TEFC motor
- Custom engineered single input dual output timing gearbox with C1045 steel spur gears and flange mounted self-aligning spherical roller bearings
- Dodge TA-II double reduction shaft mount reducer

● BOTTOM CLEAN-OUT PORTS (optional)

- 24" x 24" clean-out ports located along the bottom of the tub

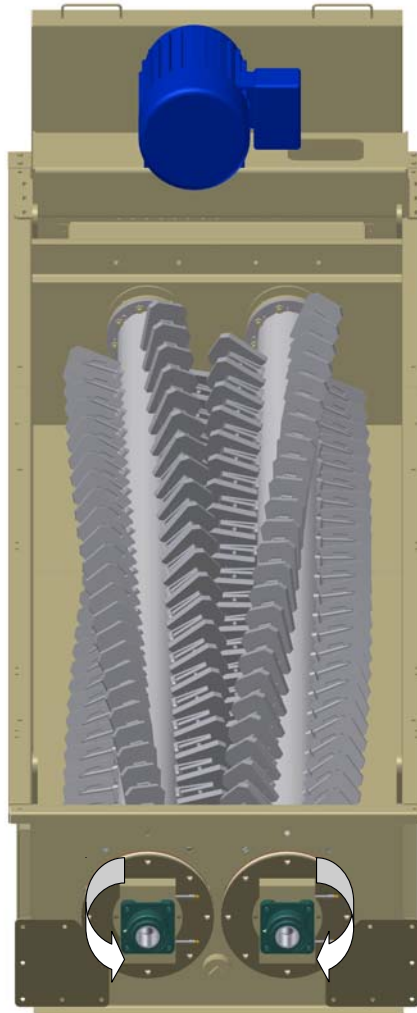
● SUPPORT ASSEMBLY (optional)

- Skid assembly with support locations for operation at 6°, 8°, or 10°

● PHYSICAL/OPERATING CHARACTERISTICS

- Feed Material Size - 3" max. x 3/8" or #4 mesh min.
- Angle of Operation - adjustable (6°, 8°, or 10°)
- Capacity - 25 - 80 TPH
- Shaft Speed - 45 rpm
- Water Requirements - 25 - 250 gpm
- Operational Dim. @ 8° Angle of Operation - 21'8" long x 5'0" wide x 9'0" high (with optional support assembly)
- Loads - Approx. Dead Load = 12,500 lbs. support not included
 Approx. Live Load = 15,000 lbs. support not included
 Approx. Total Load = 27,500 lbs. support not included

MODEL	CAPACITY (TPH)	SPIRAL SPEED (RPM)	MOTOR HP	MAXIMUM FEED SIZE	WATER REQ'D (GPM)
8024-18	25-80	45	40	3"	25-250
8036-30	85-200	33	100	4"	50-500
8048-30	125-300	26	150	5"	100-800
8048-35	125-400	26	200	5"	100-800



Reverse involute
paddle configuration

NOTE: Specifications are subject to change without notice.

Because KPI-JCI may use in its catalog & literature, field photographs of its products which may have been modified by the owners, products furnished by KPI-JCI may not necessarily be as illustrated therein. Also continuous design progress makes it necessary that specifications be subject to change without notice. All sales of the products of KPI-JCI are subject to the provisions of its standard warranty. KPI-JCI does not warrant or represent that its products meet any federal, state, or local statutes, codes, ordinances, rules, standards or other regulations, including OSHA and MSHA, covering safety, pollution, electrical wiring, etc. Compliance with these statutes and regulations is the responsibility of the user and will be dependent upon the area and the use to which the product is put by the user. In some photographs, guards may have been removed for illustrative purposes only. This equipment should not be operated without all guards attached in their normal position. Placement of guards and other safety equipment is often dependent upon the area and how the product is used. A safety study should be made by the user of the application, and, if required additional guards, warning signs and other safety devices should be installed by the user, wherever appropriate before operating the products.



700 W 21st. St., Yankton, SD 57078
1-800-542-9311 Fax: 605-665-8858

Email: mail@kpijci.com
www.kpijci.com
Mdl 8024-18 Rev. 4, 08/09