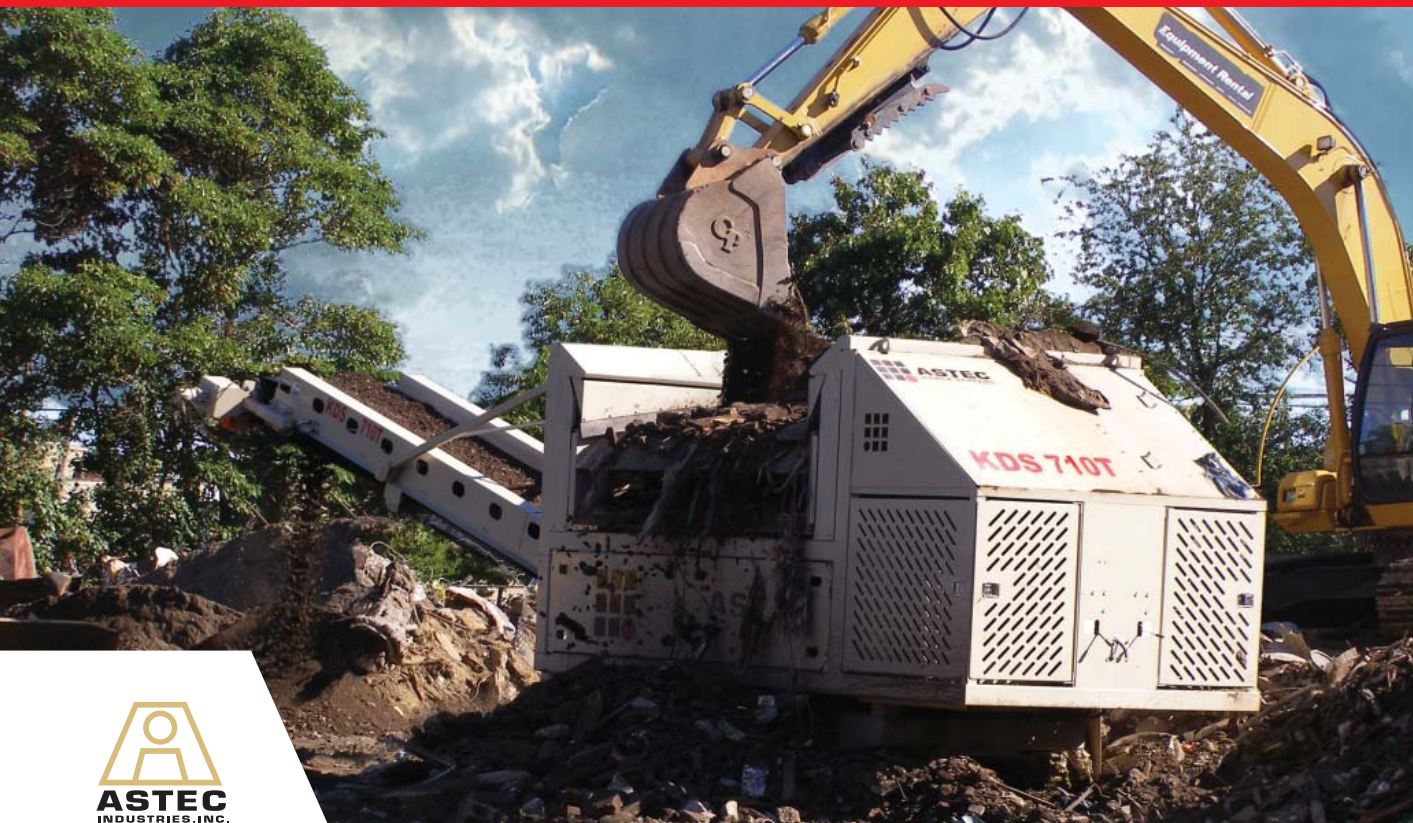


# FT710 KDS

Portable Recycling | Superior Toughness | On-Site Processing

## RECYCLING SCREEN



AGGREGATE AND  
MINING GROUP

The FT710 KDS is the ideal solution for construction and recycling Contractors. This track mounted screening plant is easy to operate and highly reliable in processing recycle materials, crushed stone, demolition waste, topsoil and more. These robust machines offer heavy-duty plate steel and AR liners in the hopper area along with high impact areas giving much longer life while processing demanding loads, it has central grease points and easy-to-reach engine controls for routine service. Capable of processing on-site and in tight construction areas, the FT710 KDS is a remote controlled track mounted unit. This allows the plant to be moved around the job site by the loader operator.

# FT710 KDS

**12 Foot**

Top feed opening for 3-5 yard loader material feed.

**80 HP**

Tier III John Deere water cooled diesel engine to power all plant functions.

**10'x 6' 8.5"**

Direct feed double deck 2 bearing screen.

**4" to 1/2"**

Standard material separations range.

## PERFORMANCE

- P1 Conventional Screen**  
2 Bearing heavy duty screen for increased capacity, wear life and reliability.

## SAFETY

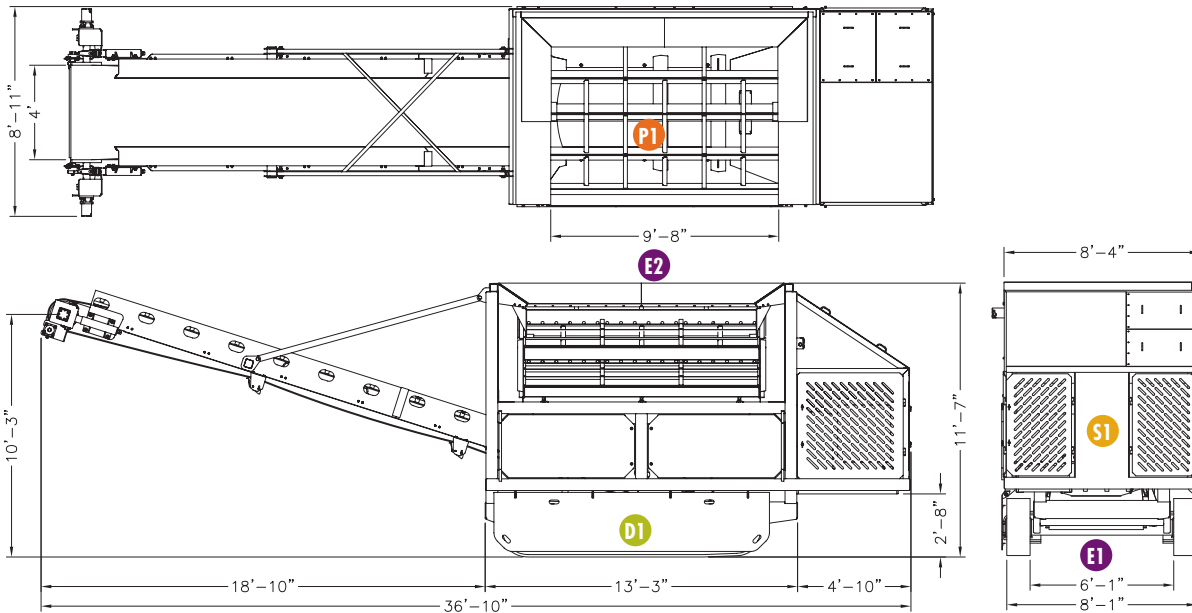
- S1 Ground Mounted Controls**  
All controls are easily accessed from the ground.

## EASE-OF-USE

- E1 Increased Ground Clearance**  
Transport and maneuver the system easily.
- E2 Central Grease Points**  
Makes routine services easy.

## DURABILITY

- D1 Heavy Duty Tracks**  
11' - 1" x 12" tracks



**Track Guards**

Track guards allow for easy cleanup and protect tracks from debris.



**Engine**

Fully protected engine and hydraulics area prevents damage to vital components.



**Easy To Use Controls**

Plant controls and the remote receiver for the unit are easily accessed and the controls are easy to use and understand.

[www.kpijci.com](http://www.kpijci.com)

### DESIGNED FOR RECYCLE

Rugged open top screen designed for sticky conditions with a lot of trash involved.

### SERVICE MADE EASY

Because we're dedicated to keeping you up and running, we've provided two resources for quality O.E.M. parts and 24/7 service. Astec Mobile Screens parts and service are available from your local dealer and/or representative at 800.545.2125

**Find the dealer or representative nearest you at [www.kpijci.com](http://www.kpijci.com).**

Because Astec Mobile Screens may use in its catalog & literature, field photographs of its products which may have been modified by the owners, products furnished by Astec Mobile Screens may not necessarily be as illustrated therein. Also continuous design progress makes it necessary that specifications be subject to change without notice. All sales of the products of Astec Mobile Screens are subject to the provisions of its standard warranty. Astec Mobile Screens does not warrant or represent that its products meet any federal, state, or local statutes, codes, ordinances, rules, standards or other regulations, including OSHA and MSHAGATOR, covering safety pollution, electrical, wiring, etc. Compliance with these statutes and regulations is the responsibility of the user and will be dependent upon the area and the use to which the product is put by the user. In some photographs, guards may have been removed for illustrative purposes only. This equipment should not be operated without all guards attached in their normal position. Placement of guards and other safety equipment is often dependent upon the area and the use to which the product is put. A safety study should be made by the user of the application, and, if required, additional guards, warning signs and other safety devices should be installed by the user, wherever appropriate before operating the products.

NOTE: SPECIFICATIONS ARE SUBJECT TO CHANGE WITHOUT NOTICE

REV. 4/11/2011