



PASSPORT™ MOBILE SHIPLOADER

110' / 130' / 150' / 170' / 190'

- Loading at least **three hatches, parallel to vessel, from the same feed point** limits moves and reduces downtime. ■
- Designed to **move inline, transversely and radially** for fast and efficient conveyor relocation. ■
- Telescopic technology allows conveyor to achieve 45% more extension to **fully trim hatches**. ■
- Experienced in design and manufacturing of high capacity mobile conveyors producing up to **5,000 tons per hour**. ■

HIGHLIGHTS



- 1/ **STINGER COVER:** Sliding tarp retracts and extends with conveyor to protect material and prevent dust.
- 2/ **DISCHARGE CHUTE:** Telescoping chute equipped with 360° trimming spoon.
- 3/ **STINGER CONVEYOR:** Reduces moves by extending and retracting to load multiple hatches from one feed point.
- 4/ **CAM ROLLERS:** Patented center pivot design supports the weight of the entire stinger conveyor equally across all rollers, which reduces stress on frame and provides longer life.
- 5/ **STINGER SAFETY STOPS:** Designs that protect your investment. Safety stops immediately react in the event of stinger cable failure, minimizing structural damage.

- 6/ **FB® UNDERCARRIAGE:** Patented for maximum undercarriage support and the most rigid lateral stability. Load sharing hydraulic cylinders add even greater structural support and safety.
- 7/ **3 POSITION AXLE:** Allows lateral travel parallel to ship, towing perpendicular to dock and radial travel for hatch loading.
- 8/ **ONBOARD POWER:** Self-contained diesel engines allow flexibility to quickly move anywhere throughout the port.
- 9/ **MOBILE PIVOT BASE:** 360° rotation at the tail of the conveyor permits lightning fast relocation.
- 10/ **SEALING SYSTEM:** Prevents material spillage in load zone by maintaining a tight seal between belt and hopper skirting.

- 11/ **MAINFRAME COVERS:** Rigid covers reduce dust and protect material from environmental hazards.
- 12/ **MULTIFUNCTIONAL MACHINE:** Same conveyor system can load, unload and stockpile material.

Australian stevedoring firm, Bulk Conveying Equipment, chose Superior brand equipment for its strength and heavy-duty construction, its customization capabilities to handle the lightest to heaviest abrasive materials; and its transfer point mobility options.

ENVIRONMENTAL OPTIONS

CORROSION PROTECTION OPTIONS

- Galvanized steel finish.
- Epoxy steel coating.
- Corrosion resistant components.
- Stainless steel fittings.

DUST SUPPRESSION OPTIONS

- Dust collection system.
- Sealed transfer points.
- Conveyor covers.
- Drip pans.
- Telescoping discharge chutes.

COLD WEATHER PROTECTION OPTIONS

- Fracture resistant steel.
- Heaters for motors, gear boxes and hydraulics.
- Arctic grade fluids.
- Thermal sleeve insulators.
- Freeze resistant motors and hoses.
- Fully enclosed conveyor.



GALVANIZED FINISH



EPOXY STEEL COATING



DUST COLLECTION SYSTEM



STAINLESS STEEL DRIP PANS



THERMAL SLEEVE INSULATORS



FULLY ENCLOSED CONVEYOR

OPTIONS

- DISCHARGE CHUTE
- TRIMMING SPOON
- SLIDING TARP STINGER COVER
- MAINFRAME COVERS
- DRIP PANS
- DUST COLLECTION SYSTEMS
- GALVANIZED STEEL FINISH
- EPOXY STEEL COATING
- CORROSION RESISTANT COMPONENTS
- STAINLESS STEEL FITTINGS
- FULLY ENCLOSED CONVEYOR
- CONVEYOR WALKWAY
- ONBOARD POWER
- MODULAR HOPPERS
- AREA LIGHTING
- MOBILE PIVOT BASE
- REMOTE CONTROL
- MOXIE® ROLLS
- URATHON® RETURN ROLLS
- AUTO GREASERS
- IMPACT BED
- LOAD ZONE SEALING SYSTEM



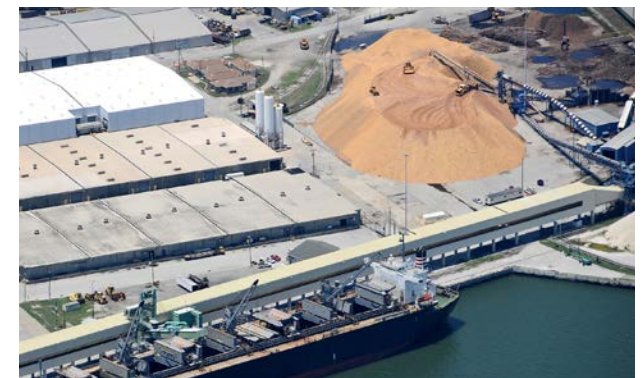
SHIP LOADING



BARGE LOADING



UNLOADING APPLICATIONS



STOCKPILE CAPACITIES

MAXIMUM STOCKPILE CAPACITIES (MANUAL PILES) Assumptions based on aggregate which has a 37° angle of repose and 100 PCF (1.6 ± m³) material density.

Conveyor Length	Stockpile Height (m)	Stockpile Volume in Cubic Yards (m³)				Stockpile Volume in Tons (MT)			
		Conical	90°	180°	270°	Conical	90°	180°	270°
110 TSFD	39' -0" (12.0)	4,900 (3,200)	19,700 (15,000)	34,400 (26,300)	49,200 (37,600)	6,600 (6,000)	26,600 (24,100)	46,500 (42,200)	66,500 (60,300)
130 TSFD	42' -0" (13.0)	6,200 (4,700)	27,300 (20,900)	48,300 (37,000)	69,300 (53,000)	8,400 (7,600)	36,800 (33,400)	65,200 (59,100)	93,600 (84,900)
130 TSXTP	45' -6" (14.0)	6,700 (5,100)	27,700 (21,200)	48,700 (37,200)	69,700 (53,300)	9,000 (8,200)	37,400 (34,000)	65,800 (59,600)	94,200 (85,500)
150 TSFD	50' -0" (15.0)	9,300 (7,100)	41,000 (31,300)	72,600 (55,500)	104,300 (79,800)	12,600 (11,400)	55,300 (50,200)	98,100 (89,000)	140,800 (127,700)
150 TSXTP	50' -0" (15.0)	9,200 (7,000)	40,100 (30,700)	71,000 (54,300)	102,000 (78,000)	12,400 (11,200)	54,100 (49,000)	95,900 (87,000)	137,700 (124,900)
170 TSXTP	58' -0" (17.5)	12,900 (9,900)	56,100 (42,900)	99,300 (76,000)	142,400 (108,900)	17,500 (15,900)	75,800 (68,800)	134,000 (121,600)	192,300 (174,500)
190 TSXTP	66' -0" (20.0)	18,700 (14,300)	82,300 (63,000)	145,800 (111,500)	209,300 (160,000)	25,300 (23,000)	111,100 (100,800)	196,800 (178,500)	282,600 (256,400)
72x190 TSPP	61' -0" (18.5)	16,700 (12,800)	75,700 (57,900)	134,800 (103,000)	193,800 (148,200)	22,500 (20,400)	102,200 (92,700)	181,600 (164,700)	261,600 (237,300)

PHOTO GALLERY

