

# KOMATSU®

## WA600-6 With Tier 3 Engine

**NET HORSEPOWER**  
393 kW **527 HP** @ 1800 rpm

**OPERATING WEIGHT**  
59421 kg **131,000 lb**

**BUCKET CAPACITY**  
6.3 m<sup>3</sup> **8.25 yd<sup>3</sup>**

**Steel Mill  
Arrangement**

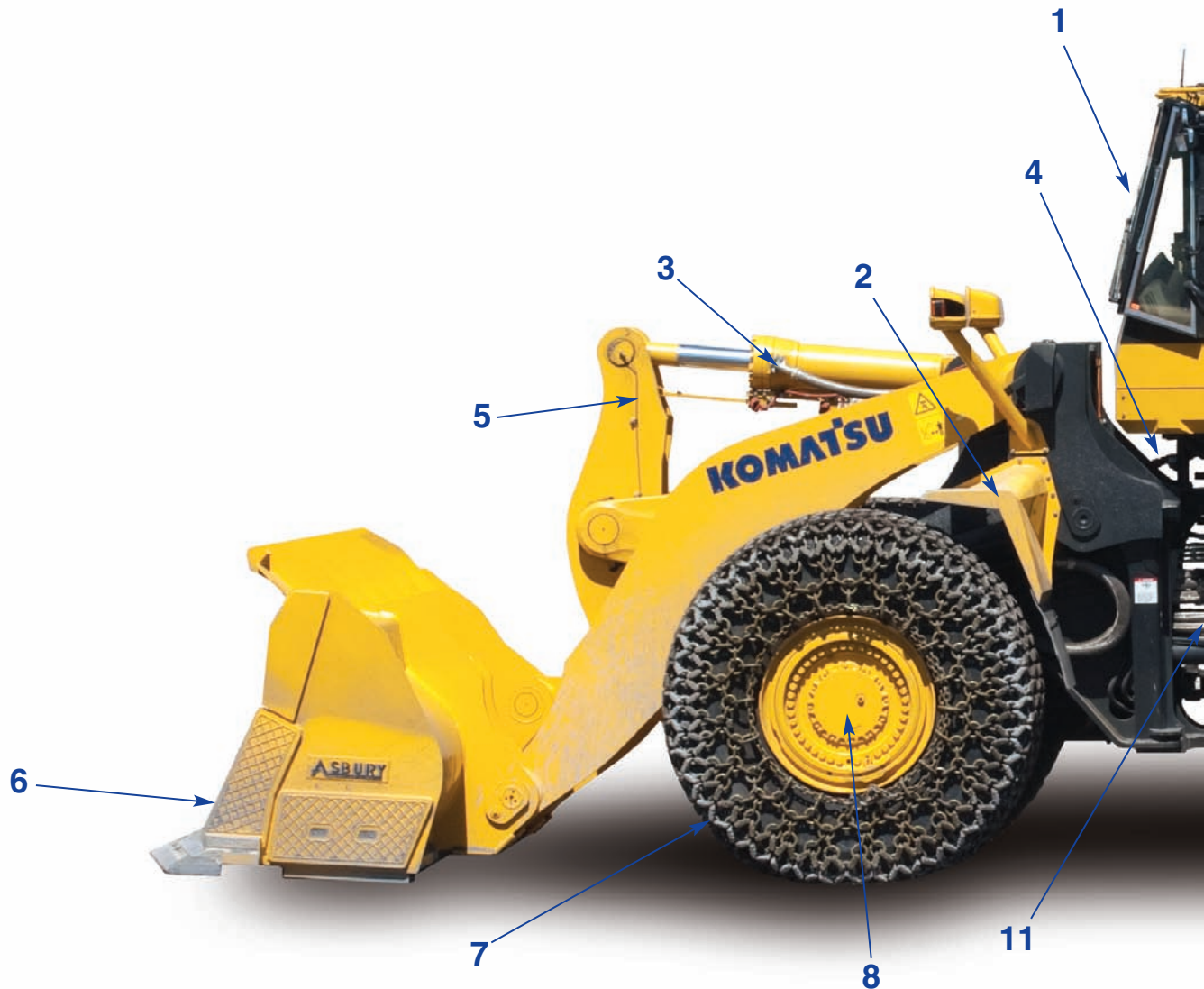


Photo may include optional and non-standard equipment.

**STEEL MILL ARRANGEMENT**  
THIS ARRANGEMENT MODIFIES THE WA600-6 FOR HANDLING AND LOADING SLAG

# WALK-AROUND

***Komatsu-integrated design*** for exceptional value, reliability and versatility. Hydraulics, powertrain, frame, and all other major components are engineered by Komatsu. You get a machine whose components are designed to work together for higher production and reliability. Now add the Komatsu designed Steel Mill Arrangement with guarding and heat protection specifically matched to the WA600-6 resulting in a loader that handles hot slag and stays working longer for increased productivity.



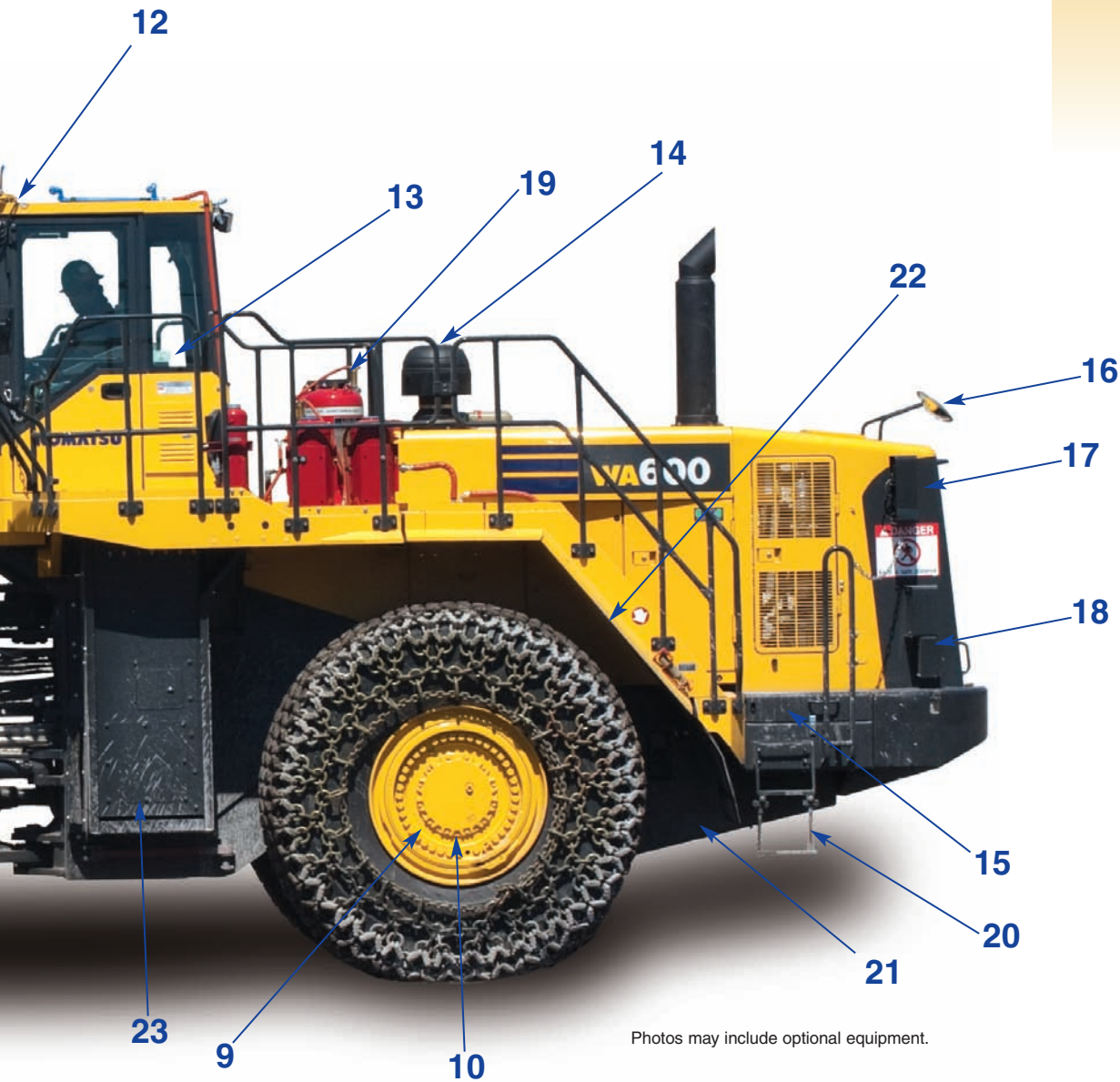
- |  |                                |
|--|--------------------------------|
| 1. Sacrificial glass                           | 5. Steel bellcrank grease tube |
| 2. Lined front steel fenders                   | 6. Slag bucket                 |
| 3. Steel braid abrasion sleeve over FIRESLEEVE | 7. L5 slick tires              |
| 4. FIRESLEEVE covered wire harnesses           | 8. Axle cooling system         |
| 5. Steel bellcrank grease tube                 | 9. Raised axle breathers       |
|  | 10. High temp axle seals       |



**NET HORSEPOWER**  
393 kW 527 HP @ 1800 rpm

**OPERATING WEIGHT**  
59421 kg 131,000 lb

**BUCKET CAPACITY**  
6.3 m<sup>3</sup> 8.25 yd<sup>3</sup>



Photos may include optional equipment.

- 11. FIRESLEEVE hose wraps
- 12. Beacon light pre-wired
- 13. Transmission override
- 14. Optimax dual stage precleaner
- 15. Sealed and insulated battery box
- 16. Metal backed mirrors
- 17. Additional light package

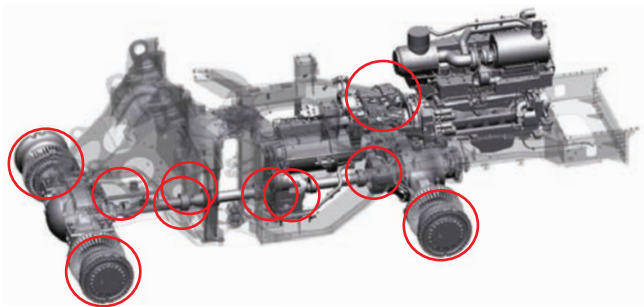
- 18. Remote rear shutdown & parking brake override box
- 19. Fire suppressant system
- 20. Steel cable steps
- 21. Underguard package
- 22. Steel lined rear fender
- 23. Hydraulic tank and component box guarding

## FEATURES

### Heat Protection

The WA600-6 Steel Mill Arrangement is built on the foundation of a proven design. This package adds critical features to protect vital machine components and fluids from the heat typically found when handling hot slag. Environmentally friendly high heat compatible EcoSafe oil is used in the hydraulic system.

All seals in the axle and drive train exceed Komatsu's extreme temperature ratings. Komatsu's axle cooling option is included as part of the Steel Mill Arrangement. This system cycles the 41 gallons of oil in each axle through individual coolers every 7-13 minutes greatly reducing the potential for heat buildup.



Plastic fuel filter water separator bowls are replaced with metal bowls and all rubber fuel lines are protected from heat with FIRESLEEVE wrap.



FIRESLEEVE covers the hydraulic hoses and all exposed wire harnesses in the front frame and the front portion of the rear frame. HD clamps replace standard clamps as necessary.



All high amperage cables from the various components to the battery boxes are wrapped with FIRESLEEVE. The two battery boxes also have an additional insulation pad underneath the box rated to 2300°F continuous exposure.



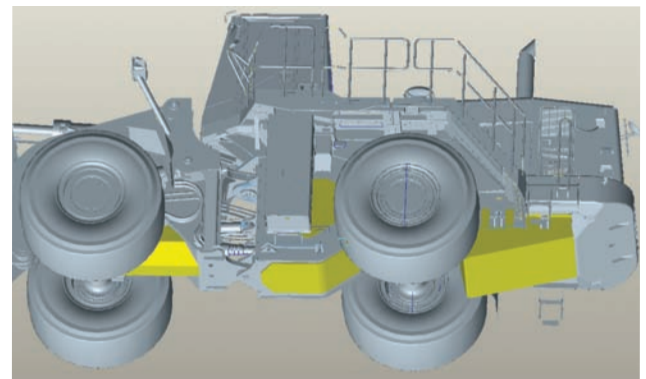
Rubber mounted steps near the battery box are replaced with steel cable steps.



### Durability

The Slag Loader is exposed to some of the worst corrosive and abrasive environments in the industry. The Komatsu Steel Mill Arrangement increases the life and durability of machine components commonly found to wear faster or get damaged in hot slag handling applications.

The guarding package completely protects all openings on the rear frame, the front frame, the axle lines, the drive train and the fuel tank with up to 1/2" thick steel.



Liners are added to the underside of the fenders and platforms, and gussets are added to square corners to reduce material build up contributing to premature component fatigue.



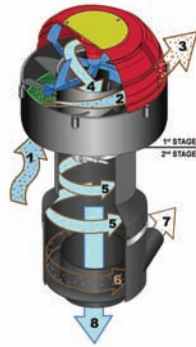
On the sides of the unit both the hydraulic tank and the break component box are protected and reinforced with 5/16" guards on the sides and bottom. Hinged bolt on covers allow easy access to maintenance and inspection locations.





## STEEL MILL ARRANGEMENT

At a steel mill there is typically a large amount of dust in the air. The Steel Mill Arrangement includes an optional dual stage Optimax system that will protect and extend the life of the air intake system and filters. In addition to this the battery boxes are also sealed to prevent dust accumulation. The battery boxes also have additional 5/16" guards on the underside of the unit.



The axle breathers are special for this application and are raised off the axle.



All external hoses at risk of coming in contact with molten material are not only wrapped with FİRESLEEVE, but also protected by steel braided abrasion sleeves. The steel sleeve also covers all FİRESLEEVE wrapped hoses passing through the articulation area.



### Operator Protection

Operator protection is always the number one concern of Komatsu. Various features added to the WA600-6 Steel Mill Arrangement provide an ergonomic and comfortable operator's compartment.

The front of the cab is protected from heat and objects by dual pane sacrificial glass. The inner glass is 7/8" thick SAFE-SHIELD, and the outer glass is 7/32" thick HEAT-SHIELD. The roof of the cab comes prewired for installation of a beacon light.



The Steel Mill Arrangement also includes 2 additional lights on the cab and 2 additional lights on the rear of the unit. This additional lighting provides increased operator visibility in low light applications.



On the rear of the loader there is an engine shut down switch and a parking brake override switch accessible from ground level. Both switches are designed to be used in emergency situations for towing the machine.



Should damage occur to the transmission shift system an additional override circuit is added in the cab. This circuit allows travel in first gear forward or reverse to move the machine from a compromising location.



The Steel Mill Arrangement comes fire suppressant ready. An additional bracket is provided in the cab to easily mount a manual activation switch and control box. Additional support is added to the right rear platform to support the additional weight of a liquid and dry chemical tank installation.



*FİRESLEEVE, a high temperature silicone rubber coated fiberglass sleeve, withstands 260°C 500°F continuous exposure; molten splash at 1205°C 2200°F for periods up to 15 minutes and short excursions to 1650°C 3000°F.*



## STANDARD EQUIPMENT

- 2-spool valve for boom and bucket controls
- 3990 mm **13'1"** boom
- 35/65-R33 rims
- Advanced Joystick Steering System (AJSS)
- Alternator, 90 A/24 V
- AM/FM stereo radio cassette
- Auto air conditioner
- Auto shift transmission with mode select system
- Back-up alarm
- Back-up lamp
- Battery disconnect switch
- Batteries, 200 Ah/12 V x 2
- Boom kick-out
- Bucket positioner
- Coolant conditioner (corrosion resister)
- Counterweight, large 3780 kg **8,333 lb**
- Directional signal
- Electronically Controlled Suspension System (ECSS)
- Engine RPM set
- Engine, Komatsu SAA6D170E-5 diesel Tier 3 compliant
- EPC fingertip control levers with automatic leveler and positioner
- Floormat
- Front fender
- Hydraulic-driven fan with reverse rotation
- In-line filter, steering
- In-line filter, high pressure hydraulic
- KOMTRAX Plus
- Lift cylinders and bucket cylinder
- Lock-up clutch torque converter
- Main monitor panel with Equipment Management Monitoring System (EMMS)
- Radiator mask, lattice type
- Rear access stairs
- Rear defroster (electric)
- Rear under view mirror (1)
- Rearview mirrors (LH and RH)
- Rear window washer and wiper
- ROPS/FOPS Level 2 cab
- Seat belt, 76 mm **3"** wide
- Seat, suspension type with reclining
- Semi-auto digging system
- Service brakes, wet disc type
- Starting motor, 11.0 kW/24 V x 2
- Steering cylinders, large capacity
- Sun visor
- Transmission, 4 forward and 4 reverse



## STEEL MILL ARRANGEMENT STANDARD EQUIPMENT

- Additional 2 front and 2 rear light package
- Axle/brake cooling system
- Beacon wiring harness
- Bellcrank grease metal tube
- Emergency engine shut down at ground level
- Fire suppressant system ready
- FIRESLEEVE exposed hoses
- FIRESLEEVE all exposed wire harnesses
- FIRESLEEVE covered high amperage wire harness
- Guarding package for hydraulic tank, brake component box, drive train, front frame, fuel tank, and fenders
- Hydraulic oil quick sample port
- Hydraulic tank drain quick coupler
- Insulated and sealed battery box
- Metal backed mirrors
- Platform guard chains
- Raised axle breathers
- Remote parking brake override at ground level
- Right rear fender
- Steel cable rear steps
- Steel sleeve hose guards
- Transmission override in cab



## STEEL MILL ARRANGEMENT OPTIONAL EQUIPMENT

- 35/65-33 tires
- Ansul Fire Suppressant System
- EcoSafe FR46 hydraulic fluid
- EcoSafe FR68 hydraulic fluid
- Lincoln Auto Lubrication System
- Optimax dual stage pre-cleaner
- Sacrificial glass
- Slag bucket



## OPERATING WEIGHT

Operating weight, 59421 kg **131,000 lb\***

\*Operating weight includes base machine, all Steel Mill Arrangement standard equipment, Ansul Fire Suppressant System, sacrificial glass, slag bucket, and L5 slick tires.

# KOMATSU®