

● **FLAT BOTTOM DENSITY CLASSIFIERS**

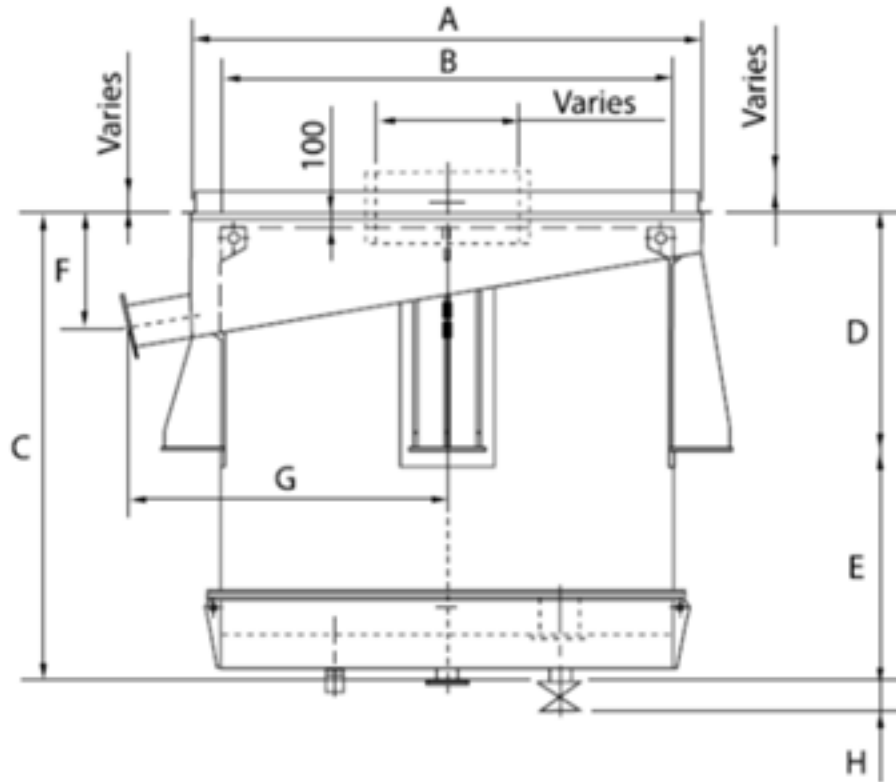
- Tank – rubber lined, all welded formed steel plate construction
- Central feed (stilling) well – rubber lined with impact plate & support frame
- Full circumference, rubber lined overflow collection flume with ANSI flange discharge outlet
- Bolt-on water injection plenum/teeter chamber complete with ANSI flange connection, diffuser plate water distribution system with multiple rubber one-way water nozzles, manual teeter water control valve and mag flow meter
- Multiple manual knife gate isolation valves and pneumatic pinch type discharge valves
- Underflow discharge control system consisting of a density probe mounted on an adjustable bracket near the overflow of the tank which controls solenoid valves to open/close the discharge valves. All controls including density set point adjustment and monitoring are housed in a NEMA 4 enclosure (Note – the enclosure ships loose for field installation on the unit or adjacent structure)



APPROX. LOADING CAPACITIES

Model	Lignite / Charcoal Removal from -250 μ m (~#60 mesh) Sand		Size Classification ~ 500 μ m (~#35 mesh)	
	Typ. Feed Rate (stph)	Approx. Teeter Water Requirements (gpm) @ 40-50 psi	Typ. Feed Rate (stph)	Approx. Teeter Water Requirements (gpm) @ 40-50 psi
DC 3.0	1 – 8	60	10 – 14	138
DC 4.0	8 – 10	90	14 – 22	198
DC 5.0	10 – 20	130	22 – 30	310
DC 6.0	20 – 24	200	30 – 50	446
DC 6.5	24 – 35	240	50 – 70	551
DC 8.0	35 – 42	360	70 – 90	793
DC 9.8	56 – 68	580	110 – 150	1281
DC 11.5	68 – 95	750	150 – 190	1687
DC 13.0	95 – 115	980	190 – 260	2203

Capacities provided are estimates only and are based on a material S.G. of 2.70.
Consult factory for specific applications



Model	No. of Discharge Valves	Dimensions (inches)							
		A	B	C	D	E	F	G	H
DC 3.0	1	63	39.4	103.3	90.6	12.7	13.5	34.8	12
DC 4.0	1	76.6	49.2	102.8	90.6	12.3	15.3	41.7	12
DC 5.0	1	83.3	59.1	102.5	89.8	12.7	22.1	47.2	12
DC 6.0	1	93.7	72	105.4	50.6	54.8	25.8	50.3	12
DC 6.5	1	116.5	78.8	112.2	57.6	54.6	29.7	66.3	12
DC 8.0	2	133	94.5	112.2	57.6	54.6	30.1	72.8	12
DC 9.8	3	140	108	118.5	59.3	60	20.3	80.2	12
DC 11.5	4	152.5	120.1	121.7	62.6	65.7	21.5	86.6	12
DC 13.0	4	168	137.6	122.7	96.7	26	26	93.4	12

FOR MORE INFORMATION CALL 1-800-542-9311 AND ASK FOR A KOLBERG EQUIPMENT SPECIALIST

NOTE: Specifications are subject to change without notice.

Because KPI-JCI may use in its catalog & literature, field photographs of its products which may have been modified by the owners, products furnished by KPI-JCI may not necessarily be as illustrated therein. Also continuous design progress makes it necessary that specifications be subject to change without notice. All sales of the products of KPI-JCI are subject to the provisions of its standard warranty. KPI-JCI does not warrant or represent that its products meet any federal, state, or local statutes, codes, ordinances, rules, standards or other regulations, including OSHA and MSHA, covering safety, pollution, electrical wiring, etc. Compliance with these statutes and regulations is the responsibility of the user and will be dependent upon the area and the use to which the product is put by the user. In some photographs, guards may have been removed for illustrative purposes only. This equipment should not be operated without all guards attached in their normal position. Placement of guards and other safety equipment is often dependent upon the area and how the product is used. A safety study should be made by the user of the application, and, if required additional guards, warning signs and other safety devices should be installed by the user, wherever appropriate before operating the products.



700 W 21st. St., Yankton, SD 57078
1-800-542-9311 Fax: 605-665-8858

Email: mail@kpijci.com
www.kpijci.com

Mdl density classifiers Rev. 1 - 07/13