

TRANSFER CONVEYORS

KPI-JCI has engineered transfer conveyors ideal for all types of operations. For semi-mobile or in-pit portability, KPI-JCI Transflite™ Transfer Conveyors are the ideal solutions and available in skid mount or dolly axle configurations. Channel or lattice frame overland conveyors are available to cover longer distances, eliminating the need for haul trucks.

Our stackable conveyors can pack up to 480 feet of conveying power in a single truckload, perfect for portable operations always on the move. For additional on-site portability, 3-pack conveyors are configured to be towed away in loads containing up to three, 70-foot long, wheel-mounted conveyors.



“ROLL-PACK™”, THREE-PACK STACKABLES

Highly portable.

50', 60' and 70' lengths available.

Roll-Pack™ assemblies provided for quick and easy setup; rolls apart in minutes for immediate use.



STACKABLES

Up to eight, 60' units on one load.

Available with numerous options to fit your operational needs.



TRANSFLITE™

Available with “dolly” axle for easy portability.

Skid support available for “in-pit” maneuvering.

60', 80' and 100' lengths available.

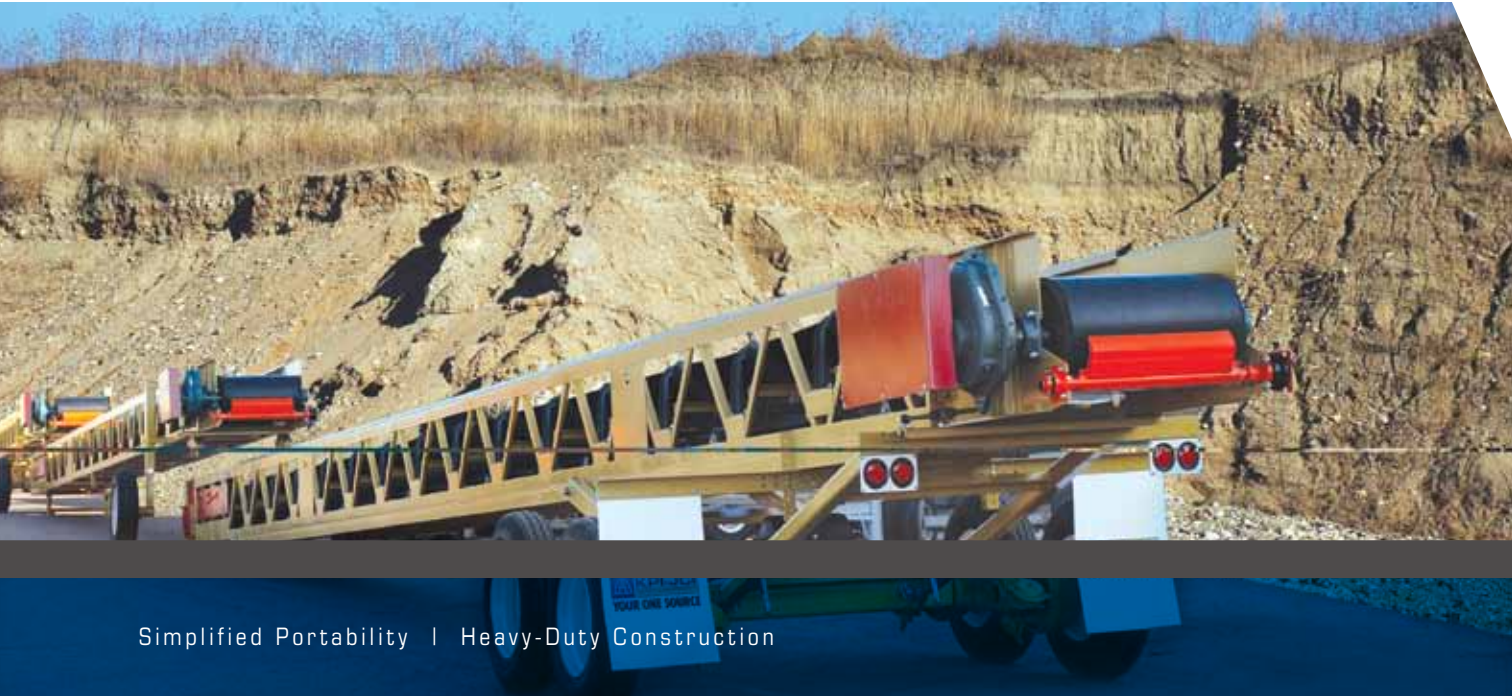


OVERLAND SYSTEMS

Available in channel or lattice frame construction.

Available in any length or belt width.

Custom designed to fit your plant seamlessly.



Simplified Portability | Heavy-Duty Construction

BENEFITS

- Stackable design decreases transportation costs.
- Quick set-up and teardown features minimize labor costs and move times.
- Robust construction ensures long-term material handling and reliability.
- Standard features increase ease of use and performance.

STACKABLE

MODEL	Size	Motor (electric)	TPH	Belt Speed
47-2450S	24" x 50'	10 HP	250	350 FPM
47-2460S	24" x 60'	10 HP	250	350 FPM
47-3050S	30" x 50'	15 HP	500	350 FPM
47-3060S	30" x 60'	15 HP	500	350 FPM
47-3650S	36" x 50'	20 HP	750	350 FPM
47-3660S	36" x 60'	20 HP	750	350 FPM
47-3670S	36" x 70'	20 HP	750	350 FPM
47-4250S	42" x 50'	20 HP	1000	350 FPM
47-4260S	42" x 60'	20 HP	1000	350 FPM

TRANSFLITE™

MODEL	Size	Motor (electric)	TPH	Belt Speed
43-2460T	24" x 60'	10 HP	250	350 FPM
44-2480T	24" x 80'	10 HP	250	350 FPM
44-24100T	24" x 100'	15 HP	250	350 FPM
43-3060T	30" x 60'	15 HP	500	350 FPM
43-3080T	30" x 80'	15 HP	500	350 FPM
43-30100T	30" x 100'	20 HP	500	350 FPM
43-3660T	36" x 60'	20 HP	750	350 FPM
44-3680T	36" x 80'	20 HP	750	350 FPM
44-36100T	36" x 100'	25 HP	750	350 FPM

STANDARD WARRANTY

The standard warranty period is (1) year or two-thousand (2,000) hours, whichever comes first, from date of delivery to the first end user.